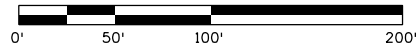
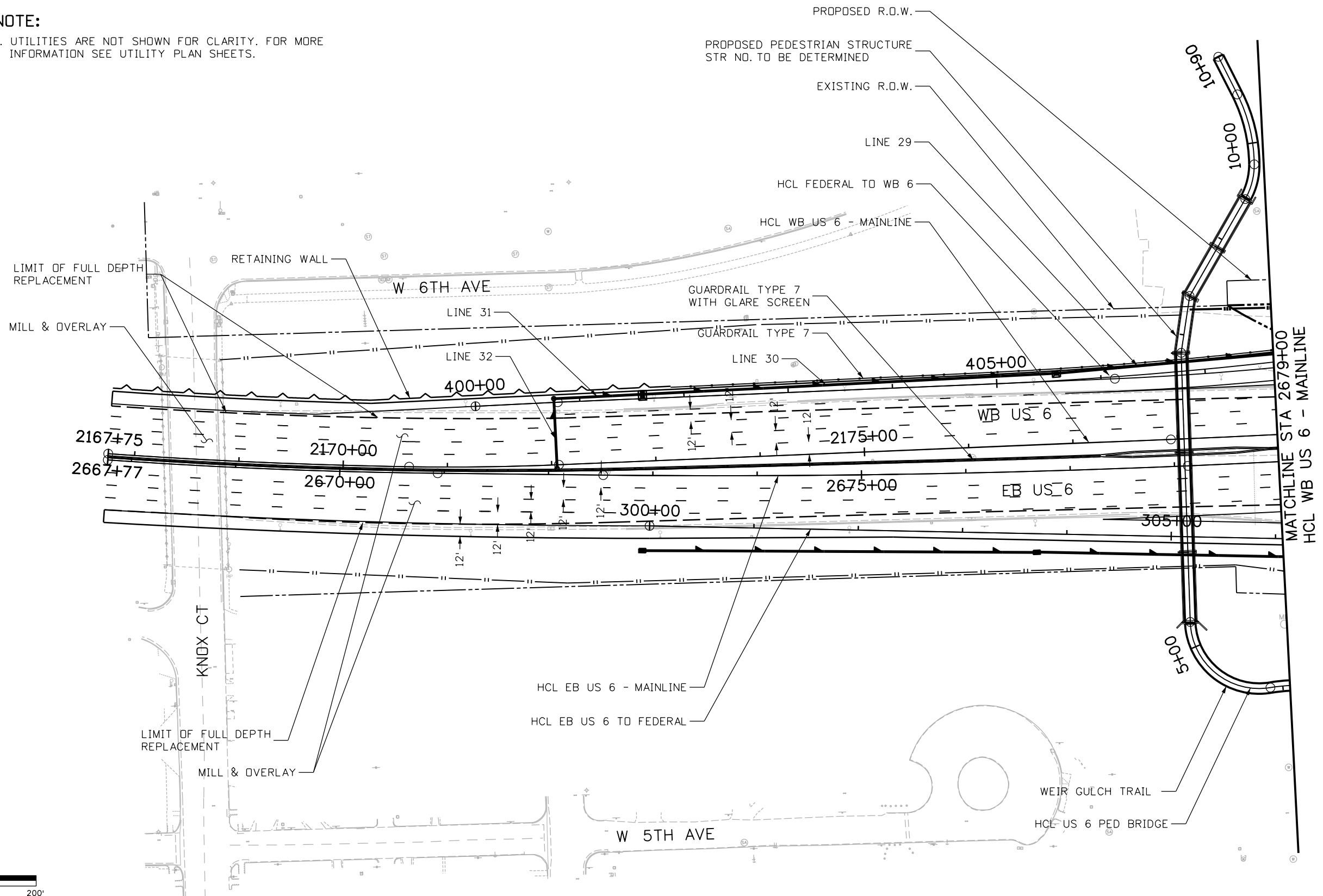




Know what's below.  
Call before you dig.

**NOTE:**

1. UTILITIES ARE NOT SHOWN FOR CLARITY. FOR MORE INFORMATION SEE UTILITY PLAN SHEETS.



Print Date: 9/18/2012
File Name: 18192_HA_DES_Plan001.dgn
Horiz. Scale: 1:100      Vert. Scale: As Noted
Unit Information      Unit Leader Initials

Sheet Revisions		
Date:	Comments	Init.

Colorado Department of Transportation  
 8833 South Wadsworth Court  
 Littleton, CO 80128  
 Phone: 303-972-9112    FAX: 303-972-9114  
 Region 6      MDP

**DRAFT**  
 Date: 09-19-12  
 Void:

US 6 BRIDGES - ROADWAY PLAN US 6 : BEGINNING OF PROJECT TO STA 2679+00	
Designer: K. BRUBAKER	Structure Numbers
Detailer: M. ROMERO	
Sheet Subset: ROADWAY	Subset Sheets: 001 of 012

Project No./Code
US 6 BRIDGES DESIGN BUILD PROJECT
18838
Sheet Number      001

kbrubaker 3:59:52 PM P:\CDDT\Region 6\US 6 Bridges\18192\_Design\Drawings\18192\_HA\_DES\_Plan001.dgn

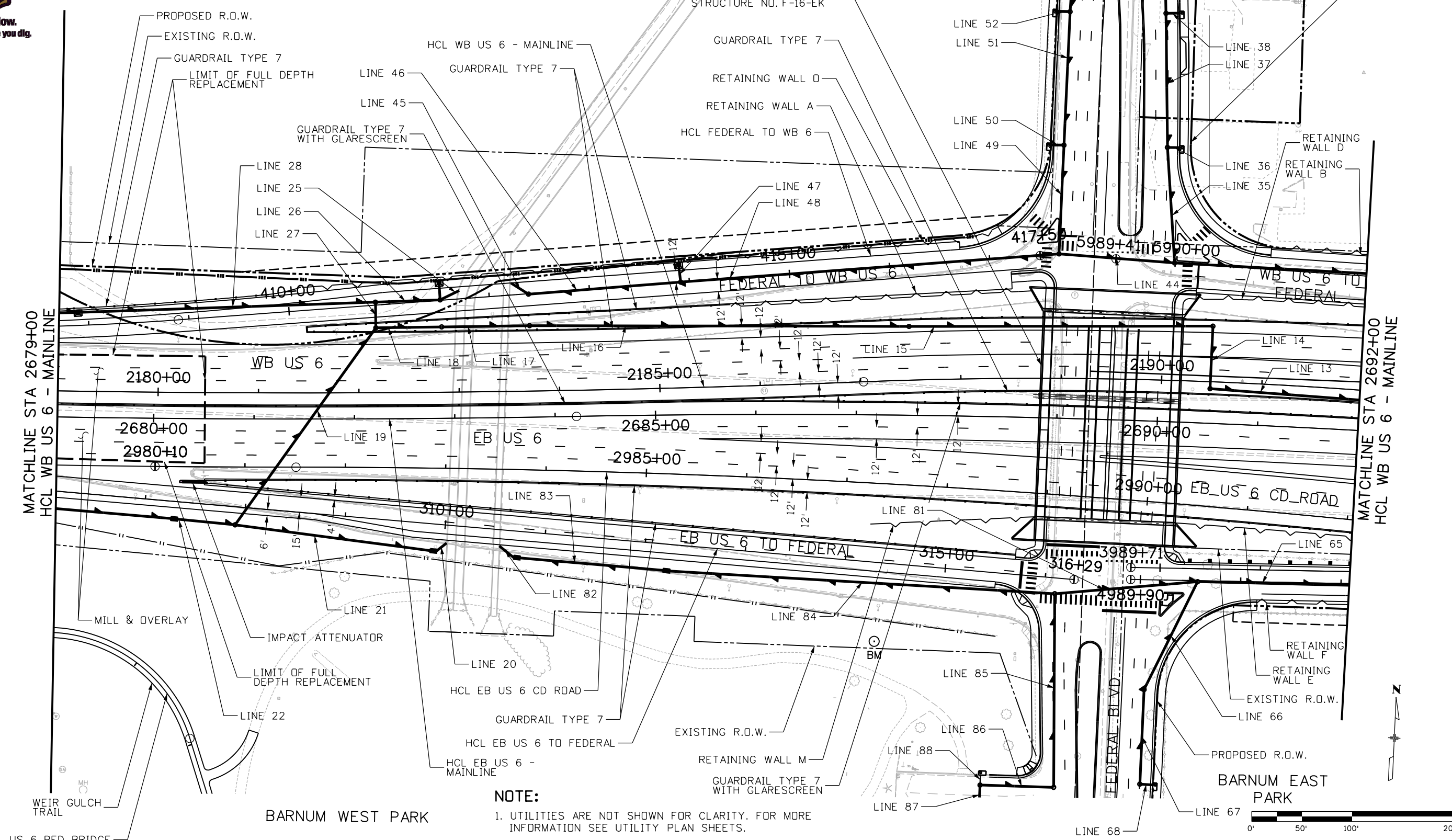


Know what's below.  
Call before you dig.

# BARNUM PARK NORTH

PROPOSED FEDERAL OVER  
US 6 STRUCTURE  
STRUCTURE NO. F-16-EK

PROPOSED  
R.O.W.



MATCHLINE STA 2679+00  
HCL WB US 6 - MAINLINE

MATCHLINE STA 2692+00  
HCL WB US 6 - MAINLINE

**NOTE:**  
1. UTILITIES ARE NOT SHOWN FOR CLARITY. FOR MORE INFORMATION SEE UTILITY PLAN SHEETS.



kbrubaker 3:59:54 PM P:\CDDT\Region 6 US 6 Bridges\18192\Design\Drawings\18192\_HA\_DES\_Plan002.dgn

Print Date: 9/18/2012
File Name: 18192_HA_DES_Plan002.dgn
Horiz. Scale: 1:100      Vert. Scale: As Noted
Unit Information      Unit Leader Initials

Sheet Revisions		
Date:	Comments	Init.

Colorado Department of Transportation  
  
 8833 South Wadsworth Court  
 Littleton, CO 80128  
 Phone: 303-972-9112 FAX: 303-972-9114  
**Region 6**      **MDP**

**DRAFT**  
 Date: 09-19-12  
 Void:

US 6 BRIDGES - ROADWAY PLAN US 6 : STA 2679+00 TO STA 2692+00	
Designer: K. BRUBAKER	Structure Numbers
Detailer: M. ROMERO	
Sheet Subset: ROADWAY	Subset Sheets: 002 of 012

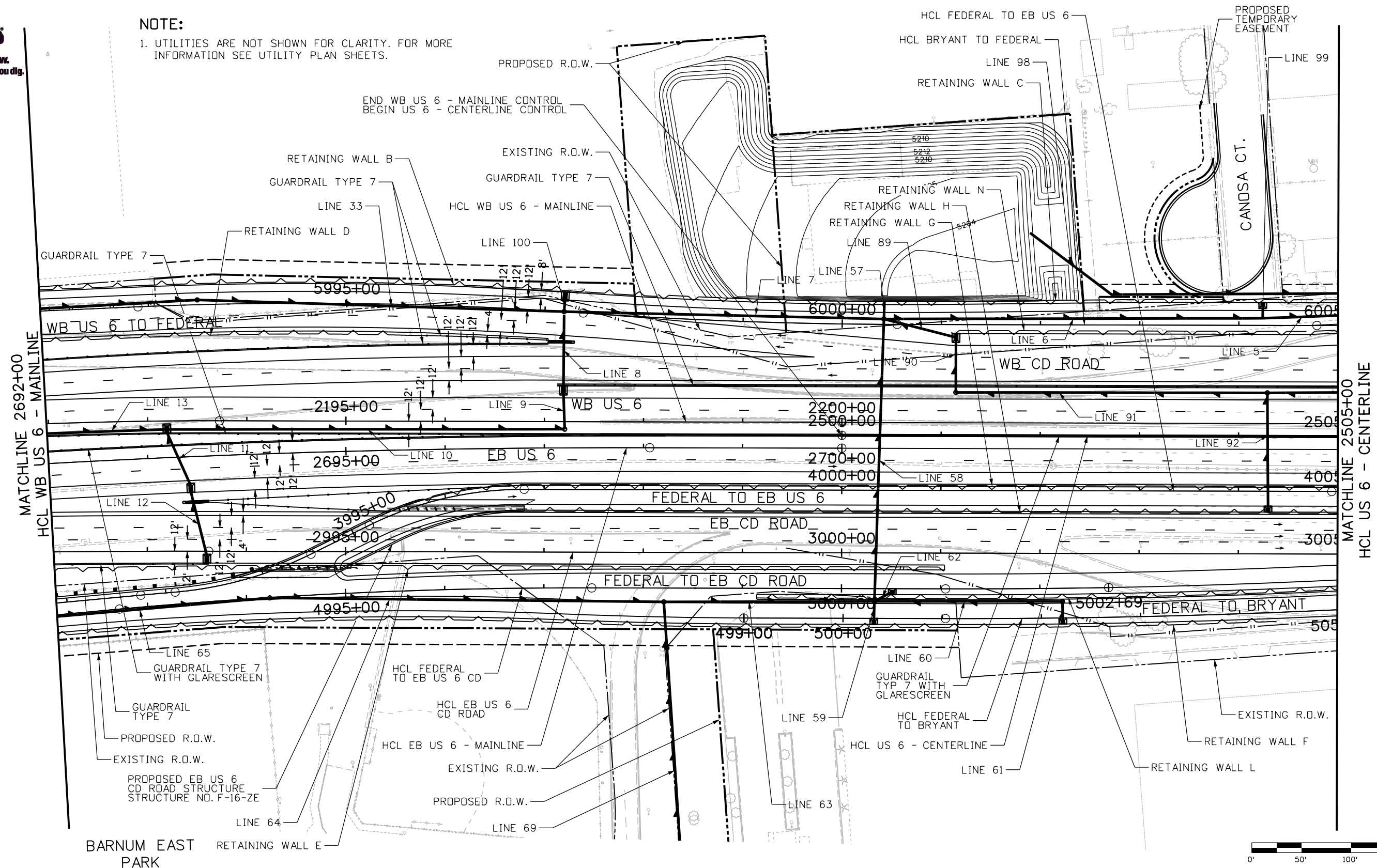
Project No./Code
US 6 BRIDGES DESIGN BUILD PROJECT
18838
Sheet Number <b>002</b>



Know what's below.  
Call before you dig.

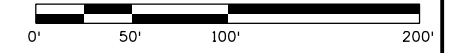
**NOTE:**

1. UTILITIES ARE NOT SHOWN FOR CLARITY. FOR MORE INFORMATION SEE UTILITY PLAN SHEETS.



MATCHLINE 2692+00  
HCL WB US 6 - MAINLINE

MATCHLINE 2505+00  
HCL US 6 - CENTERLINE




kbrubaker 3:59:56 PM P:\CDDT\Region 6\US 6 Bridges\18192\_Design\Drawings\18192\_HA\_DES\_Plan003.dgn

Print Date: 9/18/2012
File Name: 18192_HA_DES_Plan003.dgn
Horiz. Scale: 1:100      Vert. Scale: As Noted
Unit Information      Unit Leader Initials

Sheet Revisions		
Date:	Comments	Init.

Colorado Department of Transportation



8833 South Wadsworth Court  
Littleton, CO 80128  
Phone: 303-972-9112 FAX: 303-972-9114

Region 6      MDP

**DRAFT**

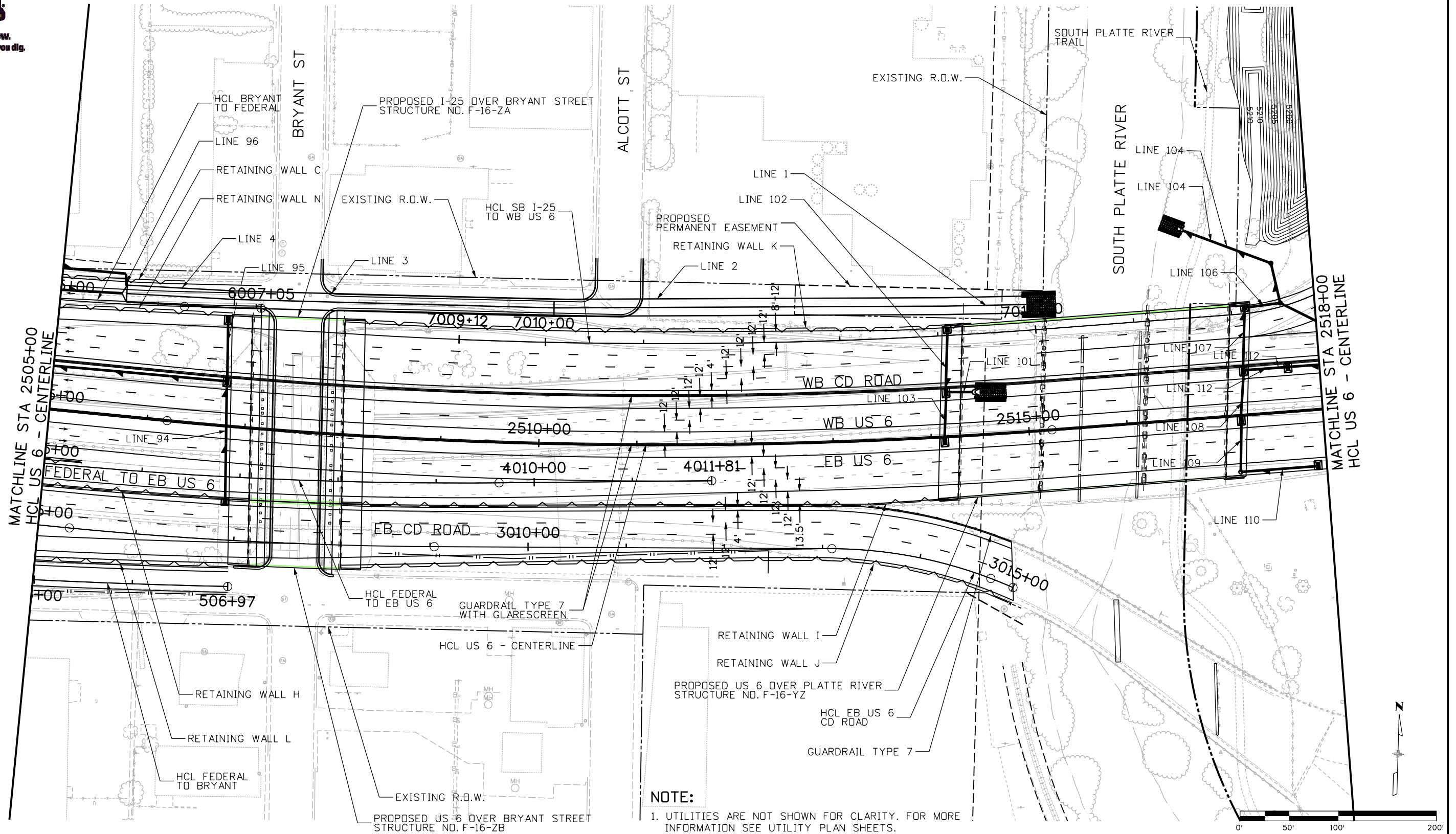
Date: 09-19-12  
Void:

US 6 BRIDGES - ROADWAY PLAN US 6 : STA 2692+00 TO STA 2505+00	
Designer: K. BRUBAKER	Structure Numbers
Detailer: M. ROMERO	
Sheet Subset: ROADWAY	Subset Sheets: 003 of 012

Project No./Code
US 6 BRIDGES DESIGN BUILD PROJECT
18838
Sheet Number <b>003</b>



Know what's below.  
Call before you dig.



**NOTE:**

1. UTILITIES ARE NOT SHOWN FOR CLARITY. FOR MORE INFORMATION SEE UTILITY PLAN SHEETS.

kbrubaker 3:59:58 PM P:\CDDT\Region 6\US 6 Bridges\18192\Design\Drawings\18192\_HA\_DES\_Plan004.dgn

Print Date: 9/18/2012

File Name: 18192\_HA\_DES\_Plan004.dgn

Horiz. Scale: 1:100

Vert. Scale: As Noted

Unit Information

Unit Leader Initials

R-X  
0000

**Sheet Revisions**

Date:	Comments	Init.

Colorado Department of Transportation



Region 6

8833 South Wadsworth Court  
Littleton, CO 80128  
Phone: 303-972-9112 FAX: 303-972-9114

MDP

**DRAFT**

Date: 09-19-12

Void:

**US 6 BRIDGES - ROADWAY PLAN**  
**US 6 : STA 2505+00**  
**TO STA 2518+00**

Designer: K. BRUBAKER

Detailer: M. ROMERO

Sheet Subset: ROADWAY

Structure

Numbers

Subset Sheets: 004 of 012

Project No./Code

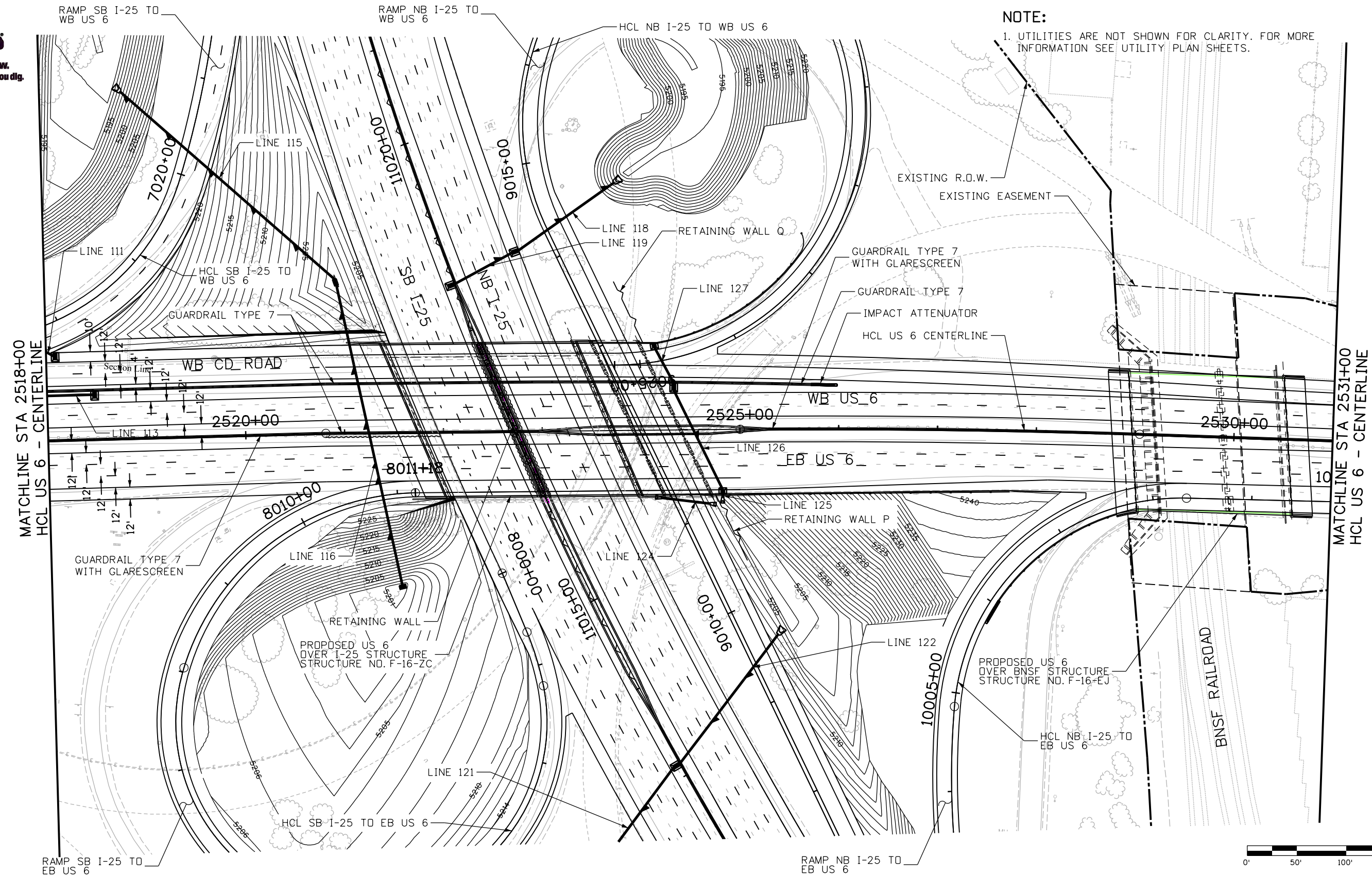
US 6 BRIDGES  
DESIGN BUILD PROJECT

18838

Sheet Number **004**



Know what's below.  
Call before you dig.



**NOTE:**

1. UTILITIES ARE NOT SHOWN FOR CLARITY. FOR MORE INFORMATION SEE UTILITY PLAN SHEETS.

MATCHLINE STA 2518+00  
HCL US 6 - CENTERLINE

MATCHLINE STA 2531+00  
HCL US 6 - CENTERLINE

kbrubaker 4:00:01 PM F:\CDDT\Region 6\US 6 Bridges\18192\_Design\Drawings\18192\_HA\_DES\_Plan005.dgn

Print Date: 9/18/2012
File Name: 18192_HA_DES_Plan005.dgn
Horiz. Scale: 1:100      Vert. Scale: As Noted
Unit Information      Unit Leader Initials

Sheet Revisions		
Date:	Comments	Init.

Colorado Department of Transportation



8833 South Wadsworth Court  
Littleton, CO 80128  
Phone: 303-972-9112 FAX: 303-972-9114

Region 6      MDP

**DRAFT**

Date: 09-19-12  
Void:

**US 6 BRIDGES - ROADWAY PLAN**  
**US 6 : STA 2518+00 TO STA 2531+00**

Designer: K. BRUBAKER  
Detailer: M. ROMERO  
Sheet Subset: ROADWAY

Structure Numbers  
Subset Sheets: 005 of 012

Project No./Code

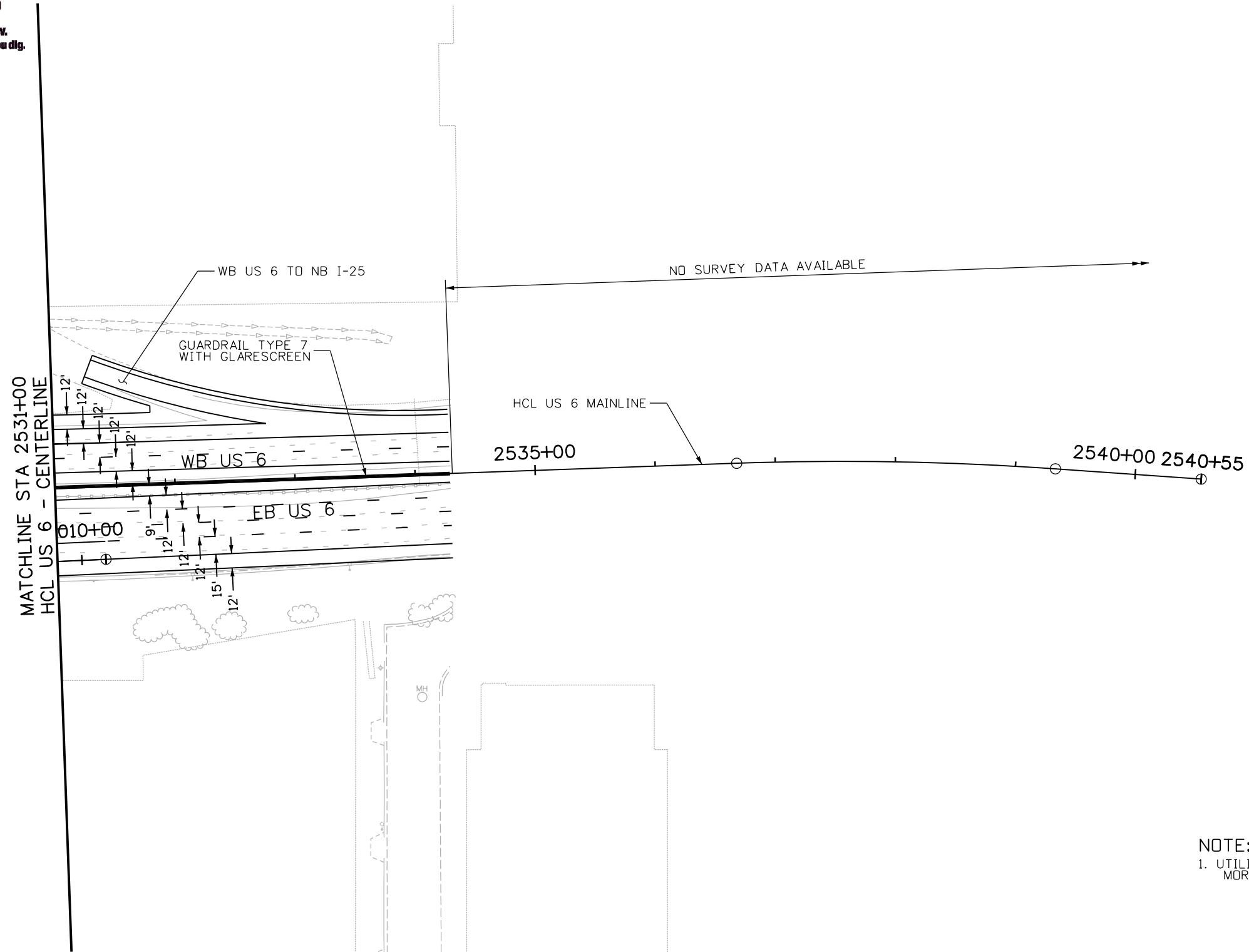
US 6 BRIDGES  
DESIGN BUILD PROJECT

18838

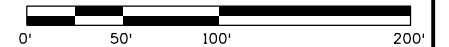
Sheet Number **005**



Know what's below.  
Call before you dig.




NOTE:  
1. UTILITIES ARE NOT SHOWN FOR CLARITY. FOR MORE INFORMATION SEE UTILITY PLAN SHEETS.



kbrubaker 4:00:03 PM P:\CDDT\Region 6\US 6 Bridges\18192\Design\Drawings\18192\_HA\_DES\_Plan006.dgn

Print Date: 9/18/2012
File Name: 18192_HA_DES_Plan006.dgn
Horiz. Scale: 1:100      Vert. Scale: As Noted
Unit Information      Unit Leader Initials

Sheet Revisions		
Date:	Comments	Init.

Colorado Department of Transportation  
  
 8833 South Wadsworth Court  
 Littleton, CO 80128  
 Phone: 303-972-9112    FAX: 303-972-9114  
 Region 6      MDP

**DRAFT**

Date: 09-19-12  
 Void:     

**US 6 BRIDGES - ROADWAY PLAN**  
**US 6 : STA 2531+00**  
**TO END OF PROJECT**

Designer: K. BRUBAKER  
 Detailer: M. ROMERO  
 Sheet Subset: ROADWAY

Structure Numbers  
 Subset Sheets: 006 of 012

Project No./Code

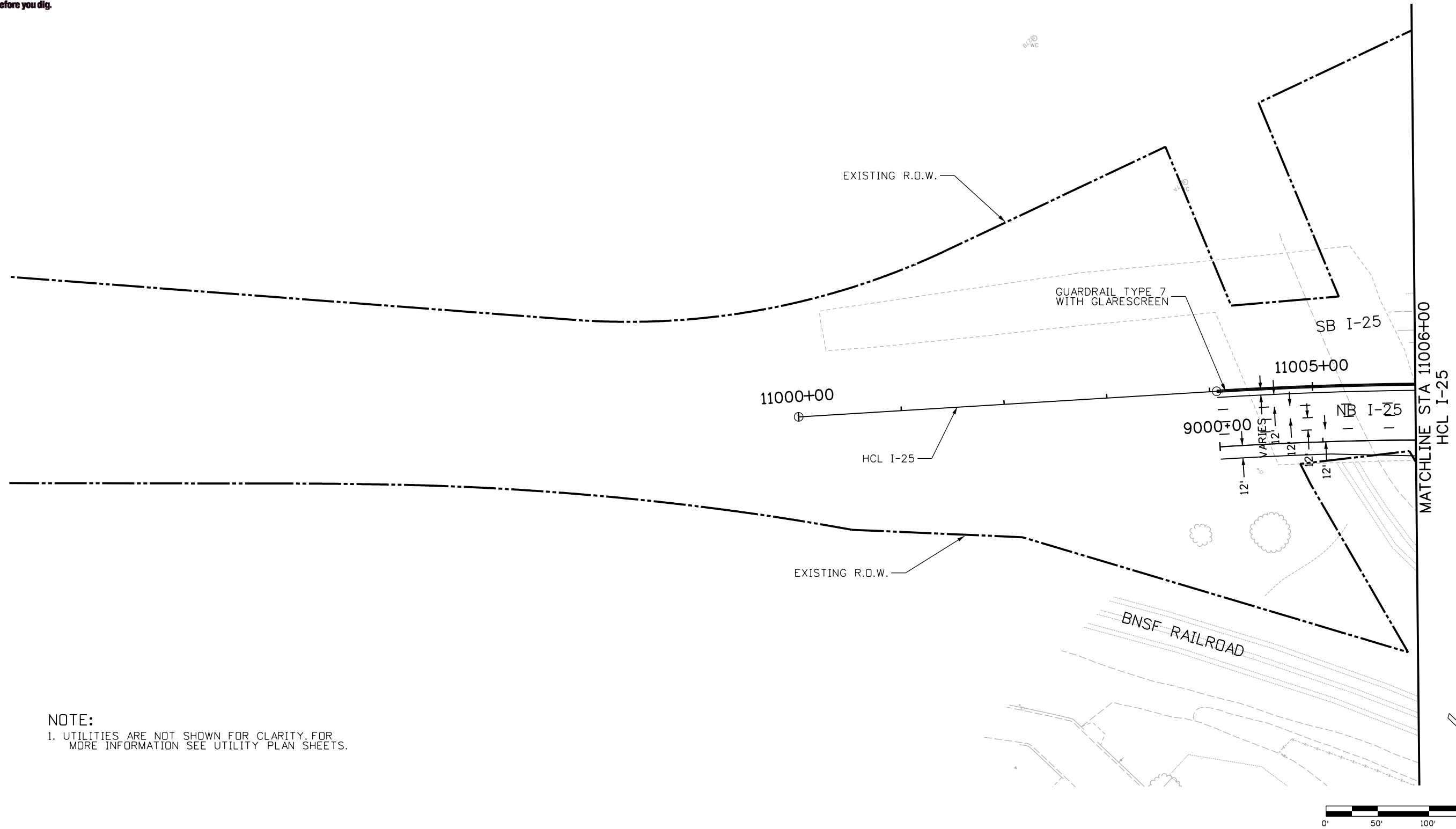
US 6 BRIDGES  
 DESIGN BUILD PROJECT

18838

Sheet Number **006**



Know what's BELOW.  
Call before you dig.



**NOTE:**  
1. UTILITIES ARE NOT SHOWN FOR CLARITY. FOR MORE INFORMATION SEE UTILITY PLAN SHEETS.

Print Date: 9/18/2012  
 File Name: 18192\_HA\_DES\_Plan007.dgn  
 Horiz. Scale: 1:100      Vert. Scale: As Noted  
 Unit Information      Unit Leader Initials

R-X  
 0000

Sheet Revisions		
Date:	Comments	Init.

Colorado Department of Transportation  
 8833 South Wadsworth Court  
 Littleton, CO 80128  
 Phone: 303-972-9112    FAX: 303-972-9114  
 Region 6      MDP

**DRAFT**

Date: 09-19-12

Void:

US 6 BRIDGES - ROADWAY PLAN  
 I:25 SOUTH END OF PROJECT  
 TO STA 11006+00

Designer: K. BRUBAKER

Detailer: M. ROMERO

Sheet Subset: ROADWAY

Structure Numbers

Subset Sheets: 007 of 012

Project No./Code

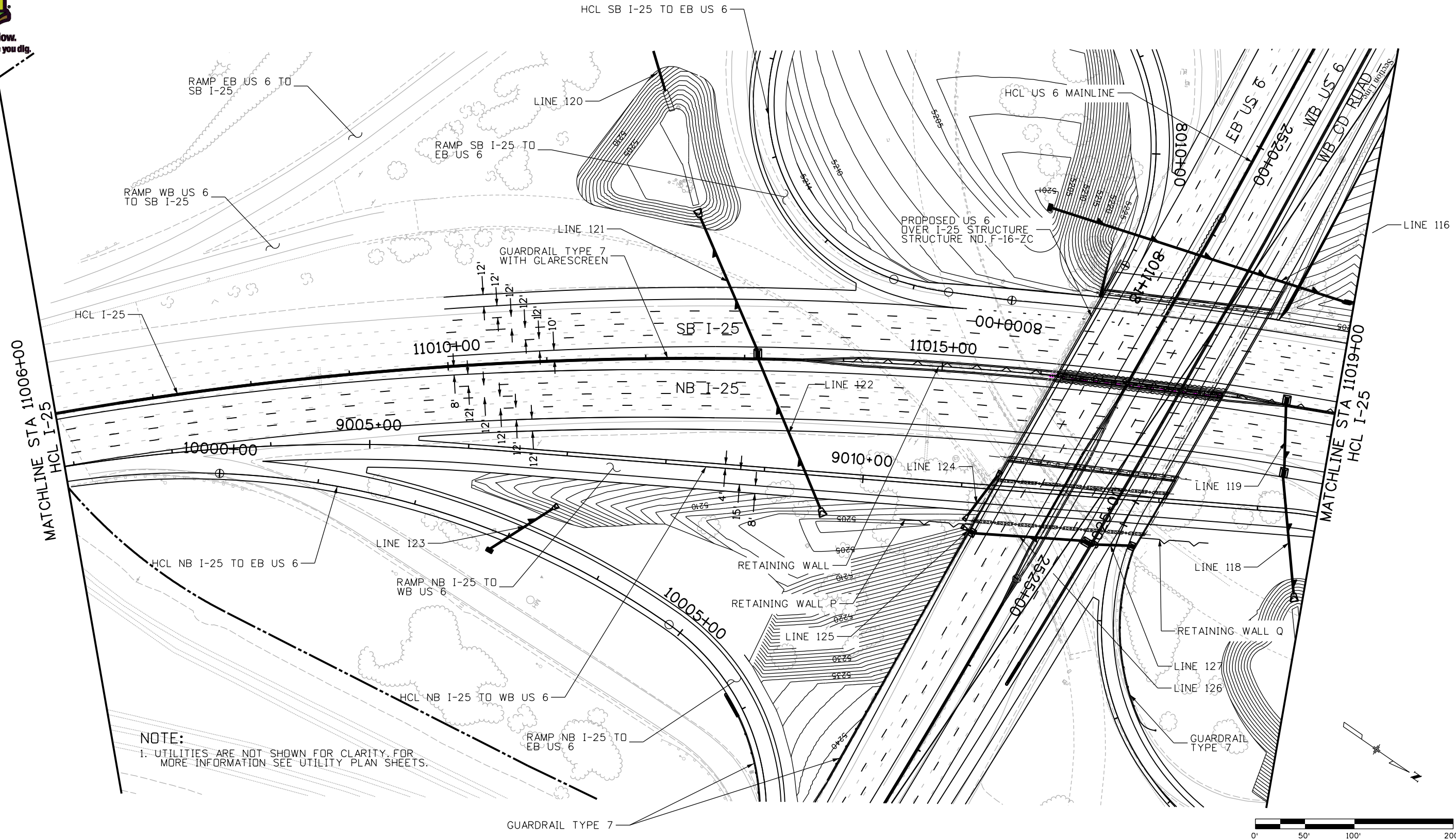
US 6 BRIDGES  
DESIGN BUILD PROJECT

18838

Sheet Number 007



Know what's below.  
Call before you dig.




**NOTE:**  
 1. UTILITIES ARE NOT SHOWN FOR CLARITY. FOR MORE INFORMATION SEE UTILITY PLAN SHEETS.

kbrubaker 4:00:07 PM P:\CDDT\Region 6 US 6 Bridges\18192\Design\Drawings\18192\_HA\_DES\_Plan008.dgn

Print Date: 9/18/2012	
File Name: 18192_HA_DES_Plan008.dgn	
Horiz. Scale: 1:100      Vert. Scale: As Noted	
Unit Information      Unit Leader Initials	

Sheet Revisions		
Date:	Comments	Init.

Colorado Department of Transportation



8833 South Wadsworth Court  
 Littleton, CO 80128  
 Phone: 303-972-9112    FAX: 303-972-9114

Region 6      MDP

DRAFT

Date: 09-19-12  
 Void:

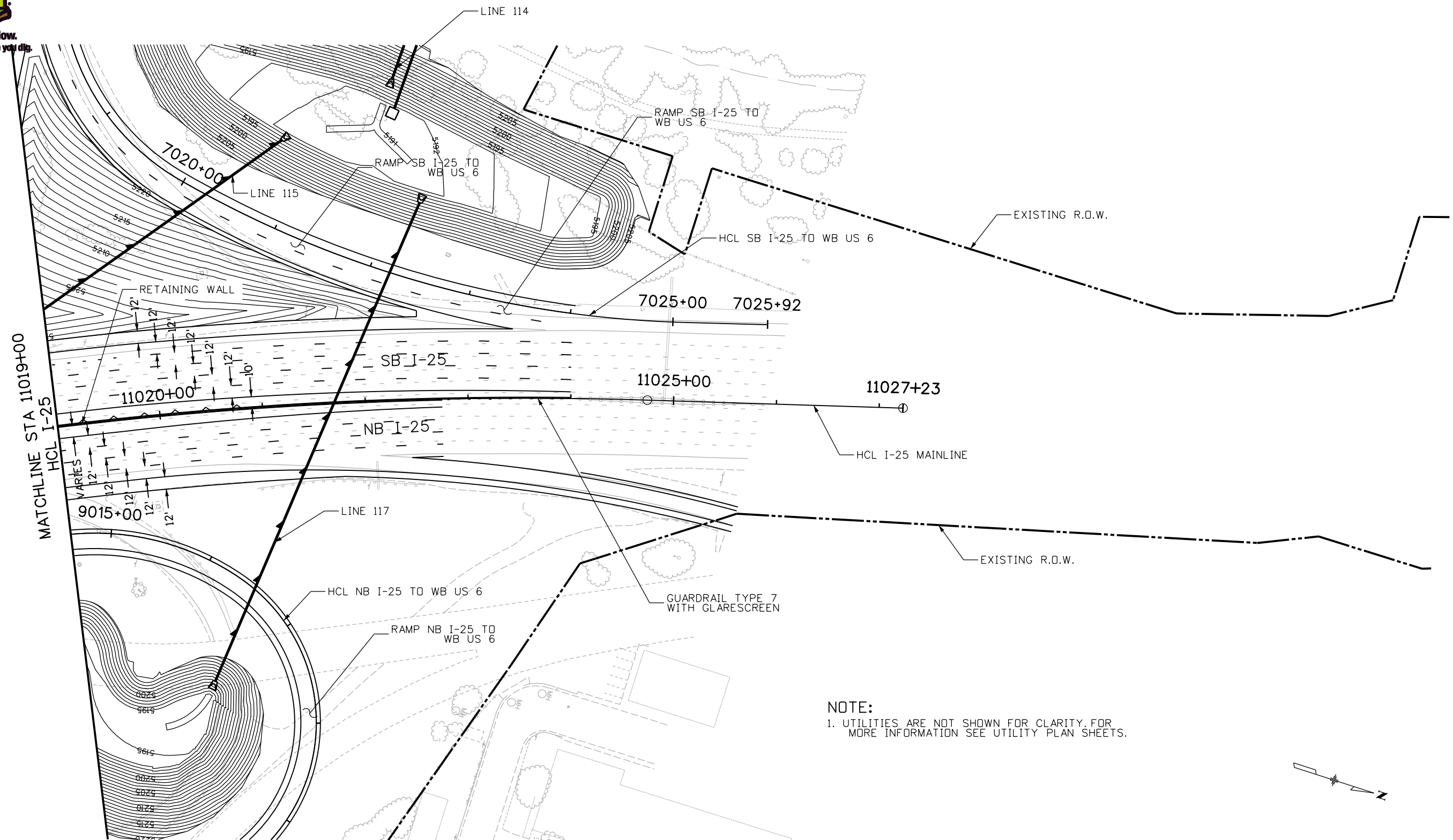
<b>US 6 BRIDGES - ROADWAY PLAN</b>	
<b>I-25 : MATCHLINE 11006+00 TO MATCHLINE 11019+00</b>	
Designer: K. BRUBAKER	Structure Numbers
Detailer: M. ROMERO	
Sheet Subset: ROADWAY	Subset Sheets: 008 of 012

Project No./Code
US 6 BRIDGES DESIGN BUILD PROJECT
18838
Sheet Number <b>008</b>

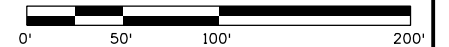




Know what's below.  
Call before you dig.



**NOTE:**  
 1. UTILITIES ARE NOT SHOWN FOR CLARITY. FOR MORE INFORMATION SEE UTILITY PLAN SHEETS.



Print Date: 9/18/2012  
 File Name: 18192\_HA\_DES\_Plan009.dgn  
 Horiz. Scale: 1:100      Vert. Scale: As Noted  
 Unit Information      Unit Leader Initials

Sheet Revisions		
Date:	Comments	Init.

Colorado Department of Transportation  
  
 8833 South Wadsworth Court  
 Littleton, CO 80128  
 Phone: 303-972-9112    FAX: 303-972-9114  
**Region 6**      **MDP**

**DRAFT**  
 Date: 09-19-12  
 Void:

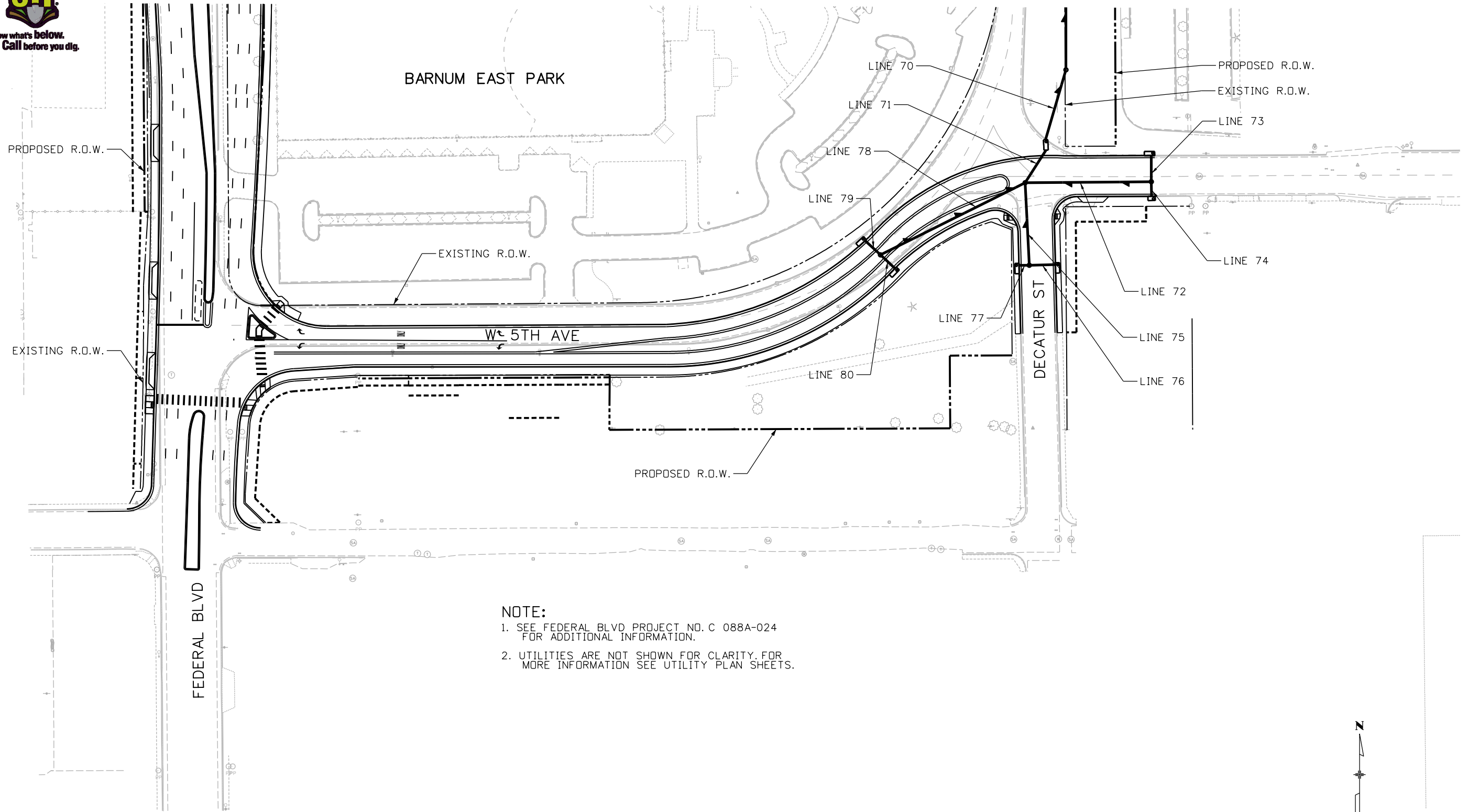
**US 6 BRIDGES - ROADWAY PLAN  
 I-25 : MATCHLINE 11019+00  
 TO NORTH END OF PROJECT**  
 Designer: K. BRUBAKER  
 Detailer: M. ROMERO  
 Sheet Subset: ROADWAY

Project No./Code  
 US 6 BRIDGES  
 DESIGN BUILD PROJECT  
 18838  
 Sheet Number **009**

kbrubaker 4:00:09 PM P:\CDDT\Region 6\US 6 Bridges\18192\_Design\Drawings\18192\_HA\_DES\_Plan009.dgn



Know what's below.  
Call before you dig.



**NOTE:**


1. SEE FEDERAL BLVD PROJECT NO. C 088A-024 FOR ADDITIONAL INFORMATION.
2. UTILITIES ARE NOT SHOWN FOR CLARITY. FOR MORE INFORMATION SEE UTILITY PLAN SHEETS.

kbrubaker 4:00:11 PM P:\CDDT\Region 6\US 6 Bridges\18192\_Design\Drawings\18192\_HA\_DES\_Plan010.dgn

Print Date: 9/18/2012  
 File Name: 18192\_HA\_DES\_Plan010.dgn  
 Horiz. Scale: 1:100      Vert. Scale: As Noted  
 Unit Information      Unit Leader Initials

R-X  
0000

Sheet Revisions		
Date:	Comments	Init.

Colorado Department of Transportation  
  
 8833 South Wadsworth Court  
 Littleton, CO 80128  
 Phone: 303-972-9112    FAX: 303-972-9114  
 Region 6      MDP

**DRAFT**

Date: 09-19-12  
Void:

US 6 BRIDGES - ROADWAY PLAN  
W 5TH AVE

Designer: K. BRUBAKER    Structure Numbers  
 Detailer: M. ROMERO  
 Sheet Subset: ROADWAY    Subset Sheets: 010 of 012

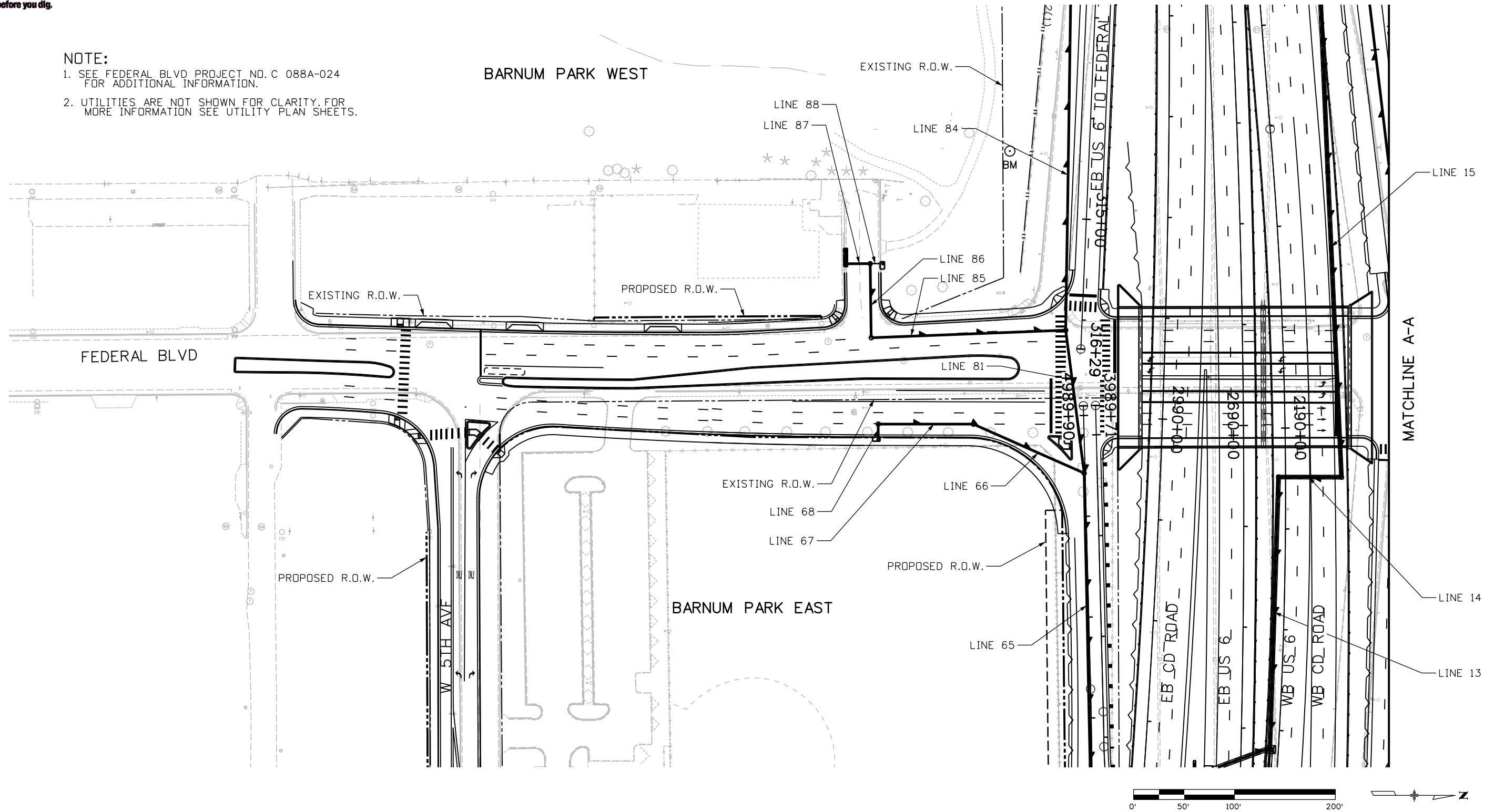
Project No./Code  
 US 6 BRIDGES  
 DESIGN BUILD PROJECT  
 18838  
 Sheet Number    **010**



Know what's below.  
Call before you dig.

**NOTE:**

1. SEE FEDERAL BLVD PROJECT NO. C 088A-024 FOR ADDITIONAL INFORMATION.
2. UTILITIES ARE NOT SHOWN FOR CLARITY. FOR MORE INFORMATION SEE UTILITY PLAN SHEETS.



Print Date: 9/18/2012  
 File Name: 18192\_HA\_DES\_Plan011.dgn  
 Horiz. Scale: 1:100      Vert. Scale: As Noted  
 Unit Information      Unit Leader Initials

Sheet Revisions		
Date:	Comments	Init.

Colorado Department of Transportation  
  
 8833 South Wadsworth Court  
 Littleton, CO 80128  
 Phone: 303-972-9112    FAX: 303-972-9114  
 Region 6      MDP

**DRAFT**  
 Date: 09-19-12  
 Void:

US 6 BRIDGES - ROADWAY PLAN  
 FEDERAL BLVD - SOUTH END OF  
 PROJECT TO MATCHLINE A-A  
 Designer: K. BRUBAKER  
 Detailer: M. ROMERO  
 Sheet Subset: ROADWAY  
 Structure Numbers  
 Subset Sheets: 011 of 012

Project No./Code  
 US 6 BRIDGES  
 DESIGN BUILD PROJECT  
 18838  
 Sheet Number      **011**

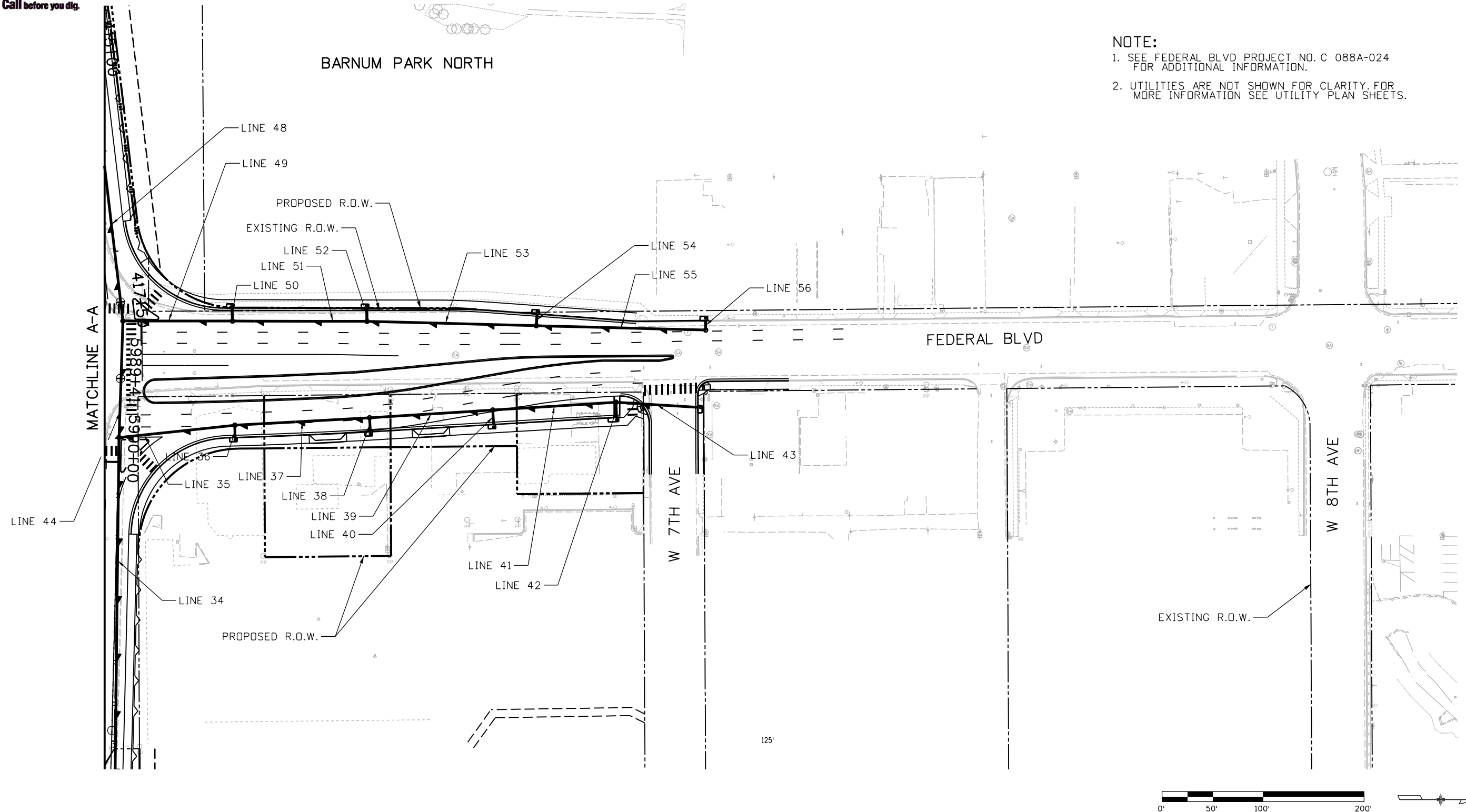


Know what's below.  
Call before you dig.

### BARNUM PARK NORTH

#### NOTE:


1. SEE FEDERAL BLVD PROJECT NO. C 088A-024 FOR ADDITIONAL INFORMATION.
2. UTILITIES ARE NOT SHOWN FOR CLARITY. FOR MORE INFORMATION SEE UTILITY PLAN SHEETS.



kbrubaker 4:00:16 PM P:\CDOT\Region 6\US 6 Bridges\18192\Design\Drawings\18192\_HA\_DES\_Plan012.dgn

Print Date: 9/18/2012
File Name: 18192_HA_DES_Plan012.dgn
Horiz. Scale: 1:100      Vert. Scale: As Noted
Unit Information      Unit Leader Initials

Sheet Revisions		
Date:	Comments	Init.

Colorado Department of Transportation  
  
 8833 South Wadsworth Court  
 Littleton, CO 80128  
 Phone: 303-972-9112    FAX: 303-972-9114  
**Region 6**      **MDP**

**DRAFT**  
 Date: 09-19-12  
 Void:

US 6 BRIDGES - ROADWAY PLAN FEDERAL BLVD - MATCHLINE A-A TO NORTH END OF PROJECT	
Designer: K. BRUBAKER	Structure Numbers
Detailer: M. ROMERO	
Sheet Subset: ROADWAY	Subset Sheets: 012 of 012

Project No./Code
US 6 BRIDGES DESIGN BUILD PROJECT
18838
Sheet Number <b>012</b>